



Supply Base Report:

Moelven Pellets AB First Surveillance Audit

Sustainable Biomass Program
sbp-cert.org



Completed in accordance with the Supply Base Report Template Version 2.2 and SBP Bridging Requirements for Meeting the Directive EU/2023/2413 (REDIII)

For further information on the SBP Framework and to view the full set of documentation see www.sbp-cert.org

Document history

Version 1.0	Published 26 March 2015
Version 2.0	Published 10 August 2023
Version 2.1	Published 15 April 2024
Version 2.2	Published 21 May 2025
Version 2.3	Published 14 August 2025

© Copyright Sustainable Biomass Program Limited 2025

Table of contents

1 Overview

2 Description of the Biomass Producer and the Supply Base

- 2.1 Description of the company
- 2.2 Detailed description of the Supply Base
- 2.3 Feedstock information

3 Supply Base Risk Assessments and Risk Management Measures

- 3.1 Summary of the Supply Base Evaluation
- 3.2 Conflicts with applicable national and sub-national legislation
- 3.3 Risk Management Measures

4 Stakeholder engagement

- 4.1 General description
- 4.2 Response to stakeholder comments

5 Report updates and approval

Annex 1: Detailed findings for Supply Base Evaluation indicators

Annex 2: EU RED Supply Base Evaluation

Annex 3: SBP Processing residues and/or Post-consumer feedstock requirements

Annex 4: EU RED detailed findings for Trees Outside Forest (TOF) feedstock

1 Overview

Producer name:	Moelven Pellets AB
Producer address:	Körvägen, 691 52 Karlskoga, Sweden
SBP Certificate Code:	SBP-13-34
Geographic position:	59.316200, 14.589960
Primary contact:	Martin Hillestad, +47 452 220 51, Martin.hillestad@moelven.no
Company website:	
Date report finalised:	26 Apr 2026
SBR reporting period from:	01 Mar 2025
SBR reporting period to:	28 Feb 2026
Name of the Certification Body:	Preferred by Nature OÜ
Certification Body Approval date:	17 May 2026
SBP Standard(s) used:	SBP Standard 2: Feedstock Verification v2.0, SBP Standard 4: Chain of Custody v2.0, SBP Standard 5: Collection and Communication of Data v2.0, Instruction Document 5E: Collection and Communication of Energy and Carbon data. v2.1, Instruction Document EU RED: Bridging Requirements for Meeting the Directive EU/2023/2413 v2.0
Feedstock origin (countries)	Sweden (-), Norway (-)
Weblink to Standard(s) used:	https://sbp-cert.org/documents/standards-documents/standards

2 Description of the Biomass Producer and the Supply Base

2.1 Description of the company

Moelven Pellet AB

Moelven Pellets AB produces wooden pellets from woodworking residues of seven sawmills. The annual production capacity is 80 000 tons wood pellets. The residues for pellet production consists of sawdust of Swedish spruce (*Picea abies*), and Scots pine (*Pinus sylvestris*) from both Sweden and Norway. All volumes are procured with an FSC and/or PEFC certification claim (SBP Compliant).

Moelven Pellets AB uses residues from the following sawmill within the Moelven Group: Moelven Valåsen AB, Moelven Notnäs Ransby AB, Moelven Edanasågen AB, Moelven Dalaträ AB and Vänerbränsle AB. Sawdust is also supplied from the Moelven external sawmills AB Hilmer Andersson and Setra Trävaror Hasselfors. All sawmill within the Moelven Pellets supply base uses as much as possible, locally harvested sawlogs. Some of the sawlogs are harvested in Norway, but supplied through swedish sawmills. The residues from the production of a saw log (100%) in Sweden is typically 25% pulp chips and 20% sawdust & shavings.

Products included in the scope of SBP Certification: *WB 1.1 Wood pellets*

Number of employees: 7

Annual maximum production capacity (metric tonnes): 80000

Number of direct feedstock suppliers: 1

Approximate number of feedstock sub-suppliers: 7

Description of the chain-of-custody and upstream supply chain:

Vänerbränsle AB supplies Moelven Pellets AB with process residues from five different sawmills that are part of the Moelven Groupe and from the external company Hilmer Andersson AB, which is also part-owner of Vänerbränsle AB. Feedstock is also sourced from Setra Hasselfors, purchased through Vänerbränsle AB. Moelven Skog AB is responsible for the raw material supply of the Moelven sawmills, while Hilmer Andersson AB has it's own organisation for supplying raw material. Setra also has its own sourcing of raw material, of which most is sourced from Mellanskog. In all cases, wood is purchased directly from private forest owners in the vicinity of the sawmills (40%) and from other forest stakeholders (B2B 60%). Through the impartial measurement association Biometria and it's IT-system VIOL, the raw material can be traced back to the harvest site through coordinates and through the raw material organization's own business system. The harvest sites are linked to the respective coordinated harvesting area. Each load creates a measurement basis and upon arrival at the sawmill, the load is measured by the impartial actor Biometria. When wood is purchased from other forest stakeholder(B2B), the raw material always meets the requirements for FSC CW. All process residues are produced with a claim for PEFC and FSC CW.

Moelven pellets AB uses transfer system FSC, and physical separation PEFC.

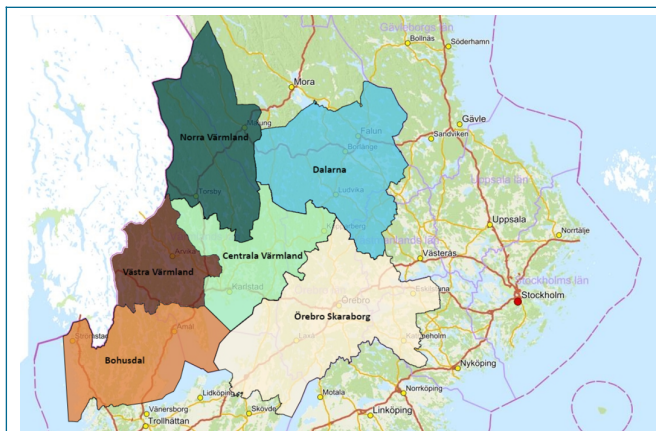
2.2 Detailed description of the Supply Base

Guidance: Tables below have been generated automatically for each sourcing country based on the selection of 'Feedstock origin (countries)' in section 1 above.

Annex 1 is generated by the system if the SBP SBE is used without Regional Risk Assessment(s) (RRAs). In case RRA(s) is used, further details shall be given only in section 3 below.

Annex 2 is generated if EU RED SBE is in the scope for each country separately.

Country	Sweden
Area/Region	-
Exclusions	
Feedstock types	Processing residues ¹
Feedstock Product Groups	Processing residues feedstock (4A)
Feedstock inputs	SBP Compliant feedstock
Is the forest managed to supply energy and non-energy markets?	Yes - Majority
For the forests in the Supply Base, is there an intention to retain, restock or encourage natural regeneration within 5 years of felling?	Yes - Majority
Risk assessment(s)	N/A – Primary and/or Processing residues certified to an SBP- recognised controlled scheme
Provide a concise summary of why a SBE was determined to be required or not required here:	
All the processing residues are procured with an FSC and/or PEFC certification claim.	
Feedstock types included in SBE:	N/A
Includes EU RED SBE:	No
Includes EU RED II SBE grandfathering	No
Includes EU RED TOF:	No
Includes EU RED II TOF grandfathering	No
Size of Supply Base area (million ha):	28.1000
Map(s) of the Supply Base area:	
<p>Virkesbalansområden</p> <p>The map shows the four wood balance areas of Sweden: Balansområde 1 (lightest green), Balansområde 2 (light green), Balansområde 3 (medium green), and Balansområde 4 (darkest green). A red circle highlights the supply base area in the southern part of the country, primarily within Balansområde 3 and 4.</p>	



Country	Norway
Area/Region	-
Exclusions	
Feedstock types	Processing residues ¹
Feedstock Product Groups	Processing residues feedstock (4A)
Feedstock inputs	SBP Compliant feedstock
Is the forest managed to supply energy and non-energy markets?	Yes - Majority
For the forests in the Supply Base, is there an intention to retain, restock or encourage natural regeneration within 5 years of felling?	Yes - Majority
Risk assessment(s)	N/A – Primary and/or Processing residues certified to an SBP- recognised controlled scheme
Provide a concise summary of why a SBE was determined to be required or not required here:	
All the processing residues are procured with an FSC and/or PEFC certification claim.	
Feedstock types included in SBE:	N/A
Includes EU RED SBE:	No
Includes EU RED II SBE grandfathering	No
Includes EU RED TOF:	No
Includes EU RED II TOF grandfathering	No
Size of Supply Base area (million ha):	12.1620
Map(s) of the Supply Base area:	



2.3 Feedstock information

- a. **Total volume of Feedstock:** 1-200,000 tonnes
 b. **Volume of primary feedstock:** 0
 c. **List of all the species in primary feedstock, including scientific name:**

Picea abies	Norway spruce
Pinus sylvestris	Scots pine

- d. **Was the feedstock used in the biomass removed from a forest as part of a pest/disease control measure or a salvage operation?** No

Explanation:

- e. **Hardwood (i.e. broadleaf trees): specify proportion of feedstock from (%):** 0.00
 f. **Softwood (i.e. coniferous trees): specify proportion of feedstock from (%):** 100.00
 g. **Proportion of feedstock composed of or derived from saw logs by weight (%):** 0.00
 h. **Indicate how you determine the proportion of saw log:** Specification used by the sawmill closest to where the wood was grown.
 i. **Roundwood from fellings from forests with > 40 yr rotation times - Average % volume of fellings delivered to BP (%):** 100.00
 j. **Select forest type(s) where the primary feedstock was sourced from:** Other
 k. **Select the main harvesting system(s) used for the sourced primary feedstock:** Other
 l. **Volume of primary feedstock from primary forest:**
 m. **Volume of processing residues feedstock:** 1-200,000 tonnes
Physical form of the feedstock: Sawdust
 n. **Share of SBP-recognised system claim for processing residues:**

100 % PEFC

- o. **Volume of post-consumer feedstock:** 0
Physical form of the feedstock: Sawdust
 p. **Estimated amount of EU RED-compliant sustainable feedstock that could be collected annually by the BP:** 200000 tonnes
 q. **What is the estimated amount of EU RED-compliant sustainable feedstock that could be harvested annually in a Supply Base (estimated):** 10000000.00 m3
Explanation: All the processing residues are procured with an FSC and/or PEFC certification claim. And the estimated volume are processing residues that are not intentionally made.

3 Supply Base Risk Assessments and Risk Management Measures

Guidance: Biomass Producers shall demonstrate that any specified risks of sourcing feedstock not in compliance with SBP Standard 1 have been adequately reduced to low risk, following Standard 2 requirements. Following section applies to Biomass Producer's implementing SBP Supply Base Evaluation (SBP RRA or company own risk assessment). EU RED Supply Base Evaluation details are reported in Annex 2.

Not Applicable – Supply Base Evaluation not implemented

3.1 Summary of the Supply Base Evaluation

3.2 Conflicts with applicable national and sub-national legislation

3.3 Risk Management Measures

Guidance: Please provide more details about specified risk indicators in each supply country and describe mitigation measures taken to address all specified risks associated with indicators.

4 Stakeholder engagement

4.1 General description

Biomass Producer's stakeholder engagement start date: 01 Apr 2026

Biomass Producer's stakeholder engagement end date: 31 Dec 2026

Total number of stakeholders contacted: 9

Give a general description of the process of Stakeholders Engagement, including stakeholders contacted, method of communication and a summary of the comments received:

Stakeholder consultation is not necessary, but Moelven Pellets AB has created a plan for stakeholder engagement. Stakeholders have been contacted via e-mail, and the supply base report is published on our website and are thus publicly available.

Moelven considers stakeholder engagement as a continuous process, and are always open for comments by the stakeholders. Therefore, we believe that the end date is at the end of each calendar year.

4.2 Response to stakeholder comments

Stakeholder description: Union representant

Stakeholder comment: Staffing levels should be increased to reduce the workload and shift changes that arises during employee absences.

Response to the stakeholder: Moelven's practices are aligned with current legislation. Shift changes are unavoidable, and any potential increase in staffing would impose a substantial financial burden. The feedback is taken seriously and will be incorporated into long-term strategic development.

5 Report updates and approval

This document is: Updated SBR (surveillance audits/scope-change audits)

None

Name	Gunilla Pettersson
Title	Management representative
Date of report approval	26 Apr 2026

Annex 1: Detailed findings for Supply Base Evaluation indicators

Annex 2: EU RED Supply Base Evaluation

Not Applicable (RED II SBE not included)

Annex 2a: EU RED II Supply Base Evaluation

Annex 3: SBP Processing residues and/or Post-consumer feedstock requirements

Not Applicable (Processing Residues and/or post-consumer feedstock not used)

Verification and monitoring of suppliers

All the suppliers are PEFC certified and the raw material is procured with a 100 % PEFC and FSC CW Claim. Moelven verifies all invoice to control the claim.

All suppliers will be visited to verify that no feedstock has been intentionally produced and a sample of all suppliers will be visited every year according to supplier audit plan for the monitoring of the requirement.

Feedstock inspection and classification upon receipt

Moelven collects all raw materials from its suppliers. Each load is registered in the IT system Viol. It is measured on a truck scale at Moelven Pellets AB. There is always a visual inspection and randomly sampling for measuring moisture at Moelven Pellets AB.

Supplier audit for processing residues and post-consumer feedstock

Supplier audits includes a tour of the facility, checking the measuring of incoming sawlog, checking the Log Yard, sawdust storage, distribution, and equipment used for production. The supplier audits are always carried out with a checklist described in the audit protocol.

The sampling methodology is described in the supplier audit plan. This document ensures audit of all suppliers during a defined period of time.

Annex 4: EU RED detailed findings for Trees Outside Forest (TOF) feedstock

NOTE: For “Trees outside forests (TOF) – Urban and landscape feedstock” no EU RED sustainability requirements apply, only the GHG savings criteria apply (SBP EU RED Bridging ID v2.0 Section 1.1). The land use category in this case is neither forest land nor agricultural land. For “Trees outside forests (TOF) – Agricultural land feedstock” the applicable criteria are Article 29 paragraphs (2)-(5).

Not Applicable (RED II TOF not included)

Annex 4a: RED II detailed findings for Trees Outside Forest (TOF) feedstock

NOTE: For “Trees outside forests (TOF) – Urban and landscape feedstock” no REDII sustainability requirements apply, only the GHG savings criteria apply (SBP REDII Bridging ID Section 4.2). The land use category in this case is neither forest land nor agricultural land. For “Trees outside forests (TOF) – Agricultural land feedstock” the applicable criteria are Article 29 paragraphs (2)-(5).